


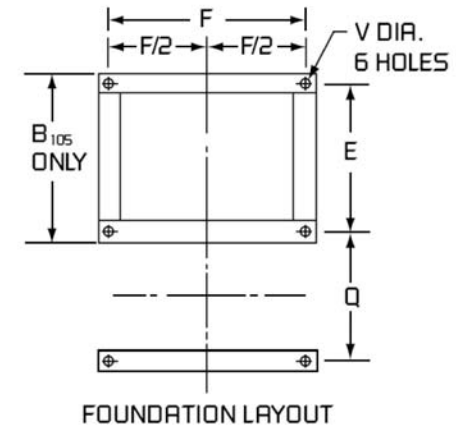
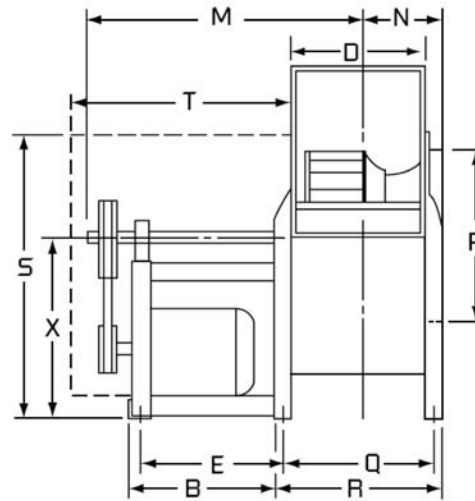
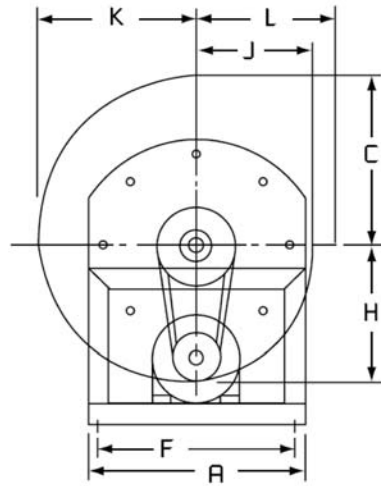
- Note:
- Letters "C" and "D" are outside housing dimensions.
 - "C" dimension on BIU-10 extends 1.06 beyond center-line.
 - Straight & angular discharge drawings are available on page 18.

CLASS I

MODEL	WHEEL DIA.	SHAFT DIA.	TH, DB, BH, UB STRAIGHT DISCHARGE										BAU, TAU, TAD, BAD ANGULAR DISCHARGE								MAX. MTR. FRAME					
			A	B	C	D	E	F	H	J	K	L	H	J	K	L	M	N	P	Q		R	S	T	V	X
BIU-10	10.50	0.75	12.9	13.0	11.6	8.0	14.3	10.8	7.9	6.8	9.1	8.1	13.3	8.9	9.6	7.1	19.6	6.0	12.9	~	~	20.5	17.0	0.4	14.0	145T
BIU-12	12.25	1.00	16.4	13.5	13.3	9.6	13.5	14.8	10.1	8.5	11.5	10.5	16.6	10.8	12.5	9.1	23.9	6.4	13.3	11.3	12.8	25.3	20.0	0.5	17.0	182T
BIU-13	13.50	1.00	17.6	13.5	14.6	10.8	13.5	16.0	11.1	9.4	12.6	11.4	18.3	11.9	13.8	10.0	24.4	7.0	14.5	12.4	13.9	25.9	20.0	0.5	17.0	182T
BIU-15	15.00	1.00	19.3	15.5	16.3	11.8	15.5	17.6	12.4	10.4	14.1	12.4	20.1	13.3	15.3	11.1	26.9	7.5	16.1	13.8	14.9	27.6	22.0	0.5	17.9	182T
BIU-16	16.50	1.00	21.4	15.0	17.8	13.0	15.5	19.8	13.6	11.4	15.5	13.4	21.9	14.6	16.8	12.3	27.5	8.5	17.9	14.5	17.0	30.1	22.0	0.5	19.5	184T
BIU-18	18.25	1.19	23.1	17.0	19.6	14.3	17.5	21.5	15.0	12.6	17.1	14.6	24.1	16.0	18.5	13.6	30.6	9.1	19.6	15.8	18.3	33.4	25.0	0.5	21.9	184T
BIU-20	20.00	1.19	25.0	17.0	21.5	15.9	17.0	23.4	16.5	13.8	18.8	15.8	26.4	17.6	20.4	14.9	31.5	10.0	21.5	17.9	20.1	36.3	25.0	0.5	23.8	213T
BIU-22	22.25	1.19	27.4	16.5	24.0	17.4	17.0	25.8	18.3	15.3	20.9	17.3	29.0	19.5	25.6	16.5	32.8	10.6	23.9	19.4	22.6	39.8	26.0	0.5	26.1	213T
BIU-24	24.50	1.44	30.3	16.5	26.3	19.3	16.8	23.6	20.1	16.9	23.0	19.9	32.5	21.5	24.9	18.3	33.6	11.8	26.4	21.3	24.5	42.9	26.0	0.5	27.8	215T
BIU-27	27.00	1.44	33.0	16.5	29.0	21.3	16.5	26.3	22.1	18.5	25.3	21.5	35.4	23.6	27.4	20.0	34.6	12.6	29.0	23.8	26.5	47.0	26.0	0.5	30.5	215T
BIU-30	30.00	1.69	36.3	16.5	32.3	23.4	16.5	29.5	24.6	20.5	28.1	23.6	39.4	26.4	30.5	22.5	36.0	13.8	32.3	26.0	28.8	51.9	27.0	0.5	33.8	254T
BIU-33	33.00	1.69	39.5	21.4	35.4	25.9	21.6	33.1	27.1	22.5	30.9	25.6	43.0	28.9	33.5	24.4	41.4	15.0	35.4	28.4	31.1	58.5	30.4	0.9	38.4	254T
BIU-36	36.50	1.94	43.1	21.4	39.3	28.5	21.6	36.9	30.0	24.9	34.1	28.0	47.4	32.0	37.1	27.0	43.3	16.3	39.0	31.0	33.8	63.8	30.4	0.9	42.1	254T

DIMENSIONS SUBJECT TO CHANGE WITHOUT NOTICE.
DRAWING NOT TO BE USED FOR CONSTRUCTION.

				 Better Airflow By Design		
						TITLE MODEL BIU UTILITY SET GENERAL SUBMITTAL CLASS I
REV	DATE	BY	JWA	DATE	19-JAN-2010	BIUClassSubmittal.dft




- Note:
- Letters "C" and "D" are outside housing dimensions.
 - "C" dimension on BIU-10 extends 1.05 beyond center-line.
 - Straight & angular discharge drawings are available on page 18.

CLASS II

MODEL	WHEEL DIA.	SHAFT DIA.	TH, DB, BH, UB STRAIGHT DISCHARGE										BAU, TAU, TAD, BAD ANGULAR DISCHARGE						MAX. MTR FRAME							
			A	B	C	D	E	F	H	J	K	L	H	J	K	L	M	N		P	Q	R	S	T	V	X
BIU-10	10.50	1.00	16.4	15.0	11.6	8.0	13.5	14.8	7.9	6.8	9.1	8.1	13.3	8.9	9.6	7.1	22.4	6.0	12.9	~	~	25.3	20.0	0.5	17.0	182T
BIU-12	12.25	1.19	16.4	15.5	13.3	9.6	15.5	14.8	10.1	8.5	11.5	10.5	16.6	10.8	12.5	9.1	25.4	6.4	13.3	11.3	12.8	25.3	22.0	0.5	17.0	184T
BIU-13	13.50	1.19	17.6	15.5	14.6	10.8	15.5	16.0	11.1	9.4	12.6	11.4	18.3	11.9	13.8	10.0	25.9	7.0	14.5	12.4	13.9	25.9	22.0	0.5	17.0	184T
BIU-15	15.00	1.19	19.3	15.5	16.3	11.8	15.5	17.6	12.4	10.4	14.1	12.4	20.1	13.3	15.3	11.1	27.0	7.5	16.1	13.8	14.9	27.6	22.0	0.5	17.9	213T
BIU-16	16.50	1.19	21.4	21.0	17.8	13.0	21.5	19.8	13.6	11.4	15.5	13.4	21.9	14.6	16.8	12.3	34.1	8.5	17.9	14.5	17.0	30.1	29.0	0.5	19.5	254T
BIU-18	18.25	1.44	23.1	21.0	19.6	14.3	21.5	21.5	15.0	12.6	17.1	14.6	24.1	16.0	18.5	13.6	34.8	9.1	19.6	15.8	18.3	33.4	29.0	0.5	21.9	254T
BIU-20	20.00	1.44	25.0	21.0	21.5	15.9	21.0	23.4	16.5	13.8	18.8	15.8	26.4	17.6	20.4	14.9	35.4	10.0	21.5	17.9	20.1	36.3	29.0	0.5	23.8	254T
BIU-22	22.25	1.69	27.4	22.5	24.0	17.4	23.0	25.8	18.3	15.3	20.9	17.3	29.0	19.5	25.6	16.5	38.4	10.6	23.9	19.4	22.6	39.8	31.5	0.5	26.1	256T
BIU-24	24.50	1.69	30.3	22.5	16.3	19.3	22.8	23.6	20.1	16.9	23.0	19.9	32.5	21.5	24.9	18.3	40.5	11.8	26.4	21.3	24.5	42.9	33.0	0.5	27.8	284T
BIU-27	27.00	1.69	33.0	21.0	29.0	21.3	21.1	26.3	22.1	18.5	25.3	21.5	35.4	23.6	27.4	20.0	39.6	12.6	29.0	23.8	26.5	47.0	32.0	0.5	30.5	284T
BIU-30	30.00	1.94	36.3	23.0	32.3	23.4	23.1	29.5	24.6	20.5	28.1	23.6	39.4	26.4	30.5	22.5	42.6	13.8	32.3	26.0	28.8	51.9	33.0	0.5	33.8	286T
BIU-33	33.00	1.94	39.5	23.0	35.4	25.9	23.3	33.1	27.1	22.5	30.9	25.6	43.0	28.9	33.5	24.4	45.0	15.0	35.4	28.4	31.1	58.5	34.0	0.9	38.4	324T
BIU-36	36.50	2.19	43.1	23.0	39.3	28.5	23.3	36.9	30.0	24.9	34.1	28.0	47.4	32.0	37.1	27.0	46.3	16.3	39.0	31.0	33.8	63.8	34.0	0.9	42.1	324T

DIMENSIONS SUBJECT TO CHANGE WITHOUT NOTICE.
DRAWING NOT TO BE USED FOR CONSTRUCTION.

											
								TITLE			
								MODEL BIU UTILITY SET GENERAL SUBMITTAL CLASS II			
REV	DATE	BY	JWA	DATE	19-JAN-2010	BIUClassISubmittal.dft					