



IN-LINE FANS

*better AIRFLOW
by DESIGN™*



MID MIXED FLOW FANS

- High capacity adjustable pitch mixed flow impeller
- Exceptionally quiet and efficient
- Multiple blade settings available
- Exact performance matching
- Standard NEMA motors
- Custom mounting arrangements available
- Diameters from 12" to 24"
- Capacities to 5,340 cfm

MID MIXED FLOW IN-LINE FANS

FEATURES & BENEFITS

- High capacity mixed flow adjustable pitch impellers
- Super quiet, highly efficient performance
- Multiple blade settings available
- Exact performance matching
- Steel housing with corrosion resistant paint
- Custom mounting arrangements available
- External junction box



APPLICATIONS

- Process ventilation
- Cabinet cooling

ACCESSORIES / OPTIONS

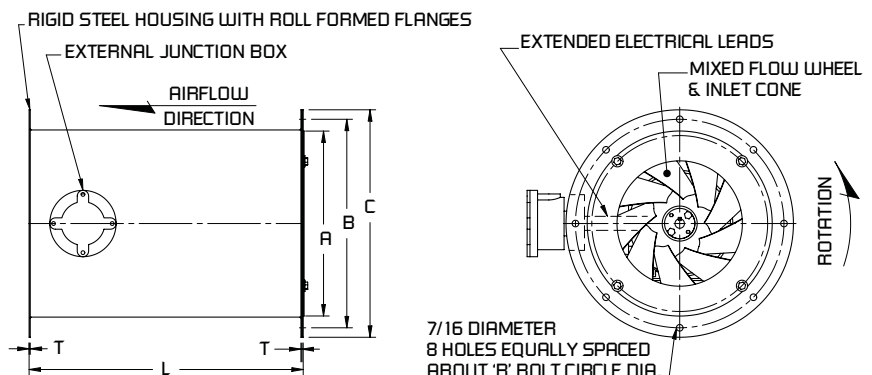
- Mounting feet
- Propeller side guard
- Motor side guard
- Inspection door
- Explosion proof motors
- Special duty motors

| MODEL | PEAK HP | MTR HP | dBA @ 5 ft | AIRFLOW PERFORMANCE (CFM) AT 1740 RPM | | | | | | | | | | |
|----------|---------|--------|------------|---------------------------------------|---------|--------|---------|-------|----------|---------|----------|-------|----------|---------|
| | | | | 0" SP | .25" SP | .5" SP | .75" SP | 1" SP | 1.25" SP | 1.5" SP | 1.75" SP | 2" SP | 2.25" SP | 2.5" SP |
| MID315-1 | 0.20 | 1/4 | 61 | 1190 | 1050 | 890 | 650 | 360 | | | | | | |
| MID315-2 | 0.23 | 1/4 | 62 | 1390 | 1260 | 1080 | 840 | 540 | | | | | | |
| MID315-3 | 0.31 | 1/3 | 64 | 1630 | 1470 | 1300 | 1050 | 720 | | | | | | |
| MID315-4 | 0.39 | 1/2 | 65 | 1830 | 1680 | 1490 | 1250 | 870 | | | | | | |
| MID315-5 | 0.49 | 1/2 | 65 | 2020 | 1870 | 1680 | 1400 | 924 | | | | | | |
| MID350-1 | 0.34 | 1/2 | 61 | 1850 | 1720 | 1570 | 1390 | 1110 | 690 | | | | | |
| MID350-2 | 0.43 | 1/2 | 62 | 2180 | 2050 | 1890 | 1690 | 1410 | 980 | | | | | |
| MID350-3 | 0.53 | 1/2 | 65 | 2540 | 2390 | 2190 | 2010 | 1700 | 1290 | | | | | |
| MID350-4 | 0.67 | 3/4 | 66 | 2930 | 2770 | 2580 | 2350 | 2050 | 1500 | | | | | |
| MID350-5 | 0.86 | 1 | 66 | 3280 | 3110 | 2900 | 2620 | 2230 | | | | | | |
| MID400-1 | 0.64 | 3/4 | 68 | 2630 | 2480 | 2310 | 2140 | 1930 | 1640 | 1260 | 700 | | | |
| MID400-2 | 0.82 | 1 | 69 | 3150 | 3010 | 2780 | 2560 | 2320 | 2040 | 1540 | 960 | | | |
| MID400-3 | 1.02 | 1 | 70 | 3590 | 3410 | 3220 | 3020 | 2740 | 2440 | 1990 | 1170 | | | |
| MID400-4 | 1.23 | 1 1/2 | 73 | 4030 | 3840 | 3620 | 3390 | 3140 | 2830 | 2280 | 1340 | | | |
| MID400-5 | 1.45 | 1 1/2 | 73 | 4380 | 4200 | 4000 | 3780 | 3490 | 3140 | 2410 | | | | |
| MID450-1 | 0.97 | 1 | 70 | 3600 | 3460 | 3300 | 3110 | 2900 | 2670 | 2350 | 1950 | 1360 | 970 | |
| MID450-2 | 1.27 | 1 1/2 | 72 | 4470 | 4280 | 4060 | 3870 | 3630 | 3360 | 3000 | 2590 | 1960 | 1320 | |
| MID450-3 | 1.58 | 1 1/2 | 73 | 5340 | 5130 | 4900 | 4640 | 4360 | 4060 | 3650 | 3170 | 2440 | 1670 | |

| MODEL | PEAK HP | MTR HP | dBA @ 5 ft | AIRFLOW PERFORMANCE (CFM) AT 3450 RPM | | | | | | | | | | |
|----------|---------|--------|------------|---------------------------------------|---------|--------|---------|-------|---------|-------|---------|-------|-------|-------|
| | | | | 0" SP | .25" SP | .5" SP | .75" SP | 1" SP | 1.5" SP | 2" SP | 2.5" SP | 3" SP | 4" SP | 5" SP |
| MID250-1 | 0.46 | 1/2 | 72 | 990 | 950 | 900 | 840 | 770 | 570 | 380 | 250 | 150 | | |
| MID250-2 | 0.49 | 1/2 | 71 | 1260 | 1220 | 1160 | 1090 | 1010 | 810 | 570 | 390 | 240 | | |
| MID250-3 | 0.52 | 3/4 | 71 | 1460 | 1410 | 1360 | 1300 | 1220 | 1000 | 730 | 500 | 300 | | |
| MID250-4 | 0.64 | 3/4 | 72 | 1640 | 1590 | 1530 | 1460 | 1360 | 1190 | 870 | 580 | 360 | | |
| MID250-5 | 0.79 | 1 | 72 | 1800 | 1750 | 1700 | 1630 | 1550 | 1300 | 930 | | | | |
| MID315-1 | 1.94 | 2 | 80 | 2470 | 2410 | 2340 | 2270 | 2200 | 2060 | 1860 | 1630 | 1330 | 790 | 410 |
| MID315-2 | 2.21 | 2 | 81 | 2970 | 2900 | 2830 | 2750 | 2660 | 2490 | 2290 | 2080 | 1770 | 1090 | 570 |

| MODEL | DIMENSIONS IN INCHES* | | | | |
|--------|-----------------------|------|------|------|-------|
| | A | B | C | L | T |
| MID250 | 12.2 | 13.8 | 15.0 | 18.0 | 0.075 |
| MID315 | 16.2 | 18.0 | 19.5 | 21.0 | 0.075 |
| MID355 | 18.2 | 20.8 | 22.0 | 24.0 | 0.105 |
| MID400 | 21.2 | 23.3 | 24.5 | 26.0 | 0.105 |
| MID450 | 24.2 | 26.3 | 27.5 | 29.0 | 0.105 |

*DO NOT USE FOR CONSTRUCTION
CONSULT FACTORY FOR CERTIFIED PRINTS



MID MIXED FLOW IN-LINE FANS

PRODUCT SPECIFICATION GUIDE

1.0 GENERAL

- A. Fans shall be model MID Direct Drive Mixed Flow Fans, as manufactured by Continental Fan Manufacturing Inc., of Buffalo, NY, and of the size and capacity as indicated on the drawings and fan schedule.
- B. Fans shall be rated and tested in accordance with ANSI/AMCA Standard 210-99.
- C. All motors and electrical components shall conform to NEMA standards.

2.0 FAN HOUSING

- A. Fan housing shall be constructed of rolled and continuously welded heavy gauge steel.
- B. Fan motor base shall be constructed of welded heavy gauge steel, and form an integral part of the interior fan housing.
- C. Fan housing and motor base shall be coated with baked polyester powder finish.

3.0 FAN IMPELLER

- A. Mixed flow impeller shall be constructed of aluminum blades and shroud secured to a steel hub assembly.
- B. Mixed flow impeller blades shall be of adjustable pitch construction to meet the required air performance. Blade pitch angles shall be factory set.
- C. Mixed flow impeller hub shall be designed to incorporate a split taper bushing, and be keyed directly to motor shaft.

4.0 FAN MOTOR AND DRIVE

- A. Motor shall be TEFC industrial duty and conform to NEMA standards.
- B. Motor shall be of voltage, horsepower, RPM and enclosure as indicated on the fan schedule.
- C. Fan shall be provided with an externally mounted and wired junction box

5.0 OPTIONAL FAN ACCESSORIES

- A. Where indicated, fan shall be provided with the following optional accessories:
 - Guards
 - Propeller side
 - Motor side
 - Inspection door
 - Mounting feet
 - Motors
 - Explosion proof
 - Special duty

6.0 FAN TESTING

- A. Mixed flow impeller shall be balanced and mounted in fan assembly.
- B. Fan assembly shall be run and tested prior to shipment.
- C. A test report shall be maintained on file for each individual fan.



Industrial Fans & Blowers

Centrifugal Blowers | Axial Fans
 Panel & Flange Fans
 Roof Ventilators | Fiberglass Fans



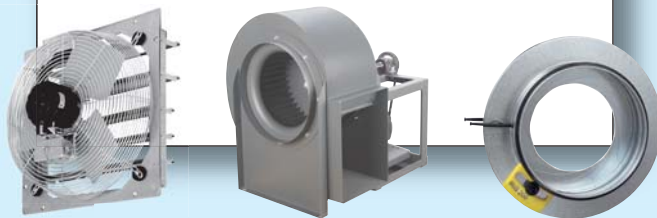
OEM Solutions & Custom Fans

Motorized Axials | Motorized Centrifugals
 OEM Impellers
 Cabinet Cooling | Plenum & Plug Fans



Commercial Fans & Dampers

Wall Fans | Utility Fans
 Cabinet & Exhaust Fans
 Roof Fans | BDD & IRIS Dampers



Residential Fans & Air Purification Systems

Bathroom Fans | In-line Duct Fans
 External Mount Duct Fans
 Dryer Boosting | Air Purification



www.continentalfan.com

— *better AIRFLOW by DESIGN™*

USA - Continental Fan Manufacturing Inc.
 203 Eggert Road, Buffalo, NY 14215
 T: 716-842-0670 • 800-779-4021 • F: 716-842-0611

Canada - Continental Fan Canada Inc.
 12-205 Matheson Blvd E, Mississauga, ON L4Z 3E3
 T: 905-890-6192 • 800-779-4021 • F: 905-890-6193

MID MIXED FLOW FANS



MID-1108